

TYSSO®

PRP-300 Thermal Receipt Printer

Instruction Manual



Please save the user manual for future reference.

Contents

A. IMPORTANT SAFETY NOTIFICATION.....	1
B. PRODUCT OVERVIEW	3
Main Features	3
Packing	4
Specification.....	5
Part Description	7
DIP Switch Configuration	13
C. INSTALLING YOUR PRINTER.....	15
1. Connecting Your Printer.....	15
2. Install/Replace the Paper Roll	17
3. Install the Driver of the Printer	20
a. For USB Interface:	24
b. For Serial Interface.....	27
c. For Ethernet (TCP/IP) Interface:	31
d. Examine the Printer.....	39
 For LPT and UTP (USB to Parallel) Interface (customized models only)	 40

D. APPENDIX	42
1. Cutter Maintenance	42
2. RS-232 Pin Assignment.....	44
3. RJ-11 Pin Assignment	45
4. Self Test.....	46
5. Code Page Setup	48
6. LPT and UTP (USB to Parallel) Interface installation (customized models reserved).....	52

A. Important Safety Notification

- Read the instruction manual carefully before use. Save the manual in the near location for further reference.
- Use only parts or accessories, especially power adapter, recommended by the manufacturer; unapproved parts may be hazardous and cause injures to the product or human.

WARNING:

IF ANY FUNCTIONAL PROBLEMS OR DEFECTS OCCUR WHICH ARE ATTRIBUTABLE TO IMPROPER USE OF THE PRODUCT SHALL VOID THE WARRANTY.

- Refer servicing to qualified personnel only.
- Do not attempt to repair or disassemble the product on your own. Opening or removing cover can expose you to dangerous voltage or other hazards.
- Before plugging the power cord into the AC inlet of the power supply unit, make sure that the voltage applied to the power outlet is within the specified range (100V ~240V). Improper power source voltage range will cause damage to the power supply unit.
- Power off the product and remove the power adapter while cleaning the system.
- Before powering on the product, make sure all the connectors, cables are firmly installed.

Important Safety Notification

- Do not expose the product to rain or moisture, such as a bathtub, a washbowl, a kitchen sink, a laundry tub, and a swimming pool.
- Do not expose the machine under direct sunlight, and keep it away from any heat source.
- Do not place the product on an unstable location, stand or table. If the machine falls, it may injure a person or cause serious damage to the appliance.
- Do not allow anything to rest on the power cord. Do not locate the product where people may walk on the cord.
- Do not make the power outlet and extension cords overload. Overload can result in fire or electric shock.
- If any of the following situations occurs, unplug the product from the power outlet immediately and consult with a qualified service person:
 1. The power cord or plug is damaged or frayed.
 2. Liquid is spilled into the system.
 3. The product is dropped and damaged.
- Use a soft cloth to clean the product when it is dirty. In case the dirt is hard to remove, use a mild detergent and wipe the product gently.
Turn OFF and unplug the product before cleaning.
- When the product is not in use, clean and stores it with care.

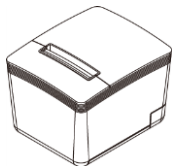
B. Product Overview



Main Features

- Compact and Stylish Design
- Paper Auto-Cutter
- Multi-I/O Interface
(Serial +Ethernet +USB)
- Cash drawer connection port (RJ-11)
- Compatible with ESC/POS print commands set
- Various Drivers support
- User friendly, drop-and-print paper installation, simple paper jam elimination
- Multiple Language fonts selectable
- DHCP Client support (Ethernet Connection)

Packing



Printer Unit



Power Adaptor



***Power Cord**



****Printer Cable**



Paper Roll



**Paper Roll
Holder**



**Paper Width
Guide**



**Quick
Installation
Guide)**

* Power Cord is selectable depending on the types of electrical plug.

** Printer cable is selectable depending on the interface required (RS-232 or USB B-Type).

*** **RJ-45 cable is not supplied and need purchased separately**

Please refer to the nearest local representatives for further information.

Specification

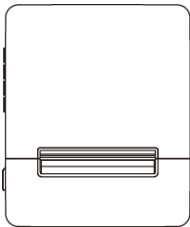
Model No.		PRP-300
Print Method		Thermal line printing
Print Speed		250mm/sec
Print Life		100 Km
Print Font	(ASCII Mode)	ANK Font. Font A: 12 x 24 dots, Font B: 9 x 17 dots
	Graphic Font)	Chinese Character: 24 x 24 dots
Print Resolution		576 dots/line or 512 dots/line
Print Font Character Support *		International Font, Big 5 Chinese, GB Chinese, Japanese, Korean selectable
Character Per Line		48 (Font A) / 64(Font B)
Effective Print Width		72mm
Paper Width		79.5mm± 0.5mm
Paper Roll Diameter		≤ 83mm
Paper Thickness		0.06~0.08mm
Driver		Win 9X/Win ME/Win 2000/ Win 2003/Win NT/Win XP/ Win Vista/Win 7, Win 8 compatible with EPSON and SAMSUNG
Print Command		ESC/POS print commands set
Buffer	Receipt	128K bytes
	User-Defined	128K bytes
	NV Flash	256K bytes

Interface	
I/O Interface	Multi I/O Interface (Serial +Ethernet +USB)
Cash Drawer	DC 24V/1A, 6-Wire RJ-11
Notification	
Indicator	Audio and LED Indicators
Auto Cutter	Partial
Paper End Notice	Yes
Over-Heat Halt-on Protection	Yes
Others	
Power Input	24VDC/2.5A (External Adapter: 100~240VAC 50/60Hz)
Color	Black / White
Compliance	FCC / CE / WEEE / RoHS
Weight	1200g (without cable)
Dimension (mm)	174(L) x 144(W) x 124(H)
Operating Temperature	0°C~45°C
Operating Humidity	10% ~ 80% RH, non-condensing
Storage Temperature	-10°C~ 60°C
Storage Humidity	10% ~ 90% RH non-condensing

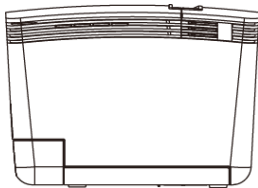
* All specifications are subject to change without prior notice.

Part Description

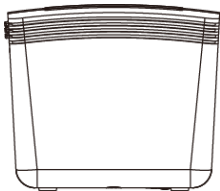
Product Views



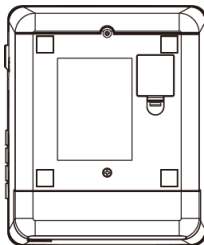
Top View



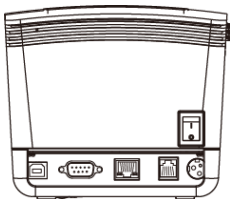
Side View



Front View

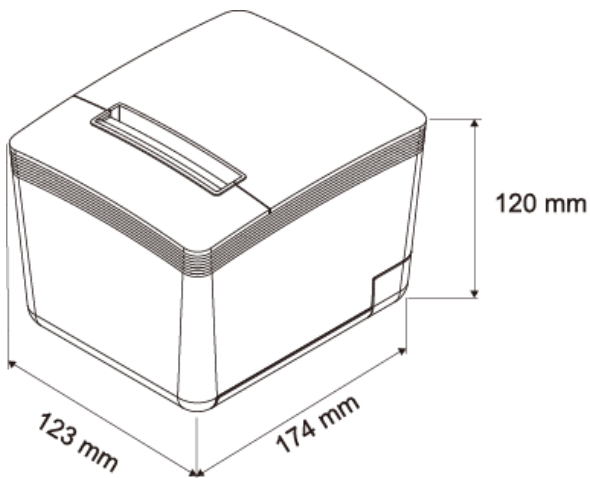


Bottom View

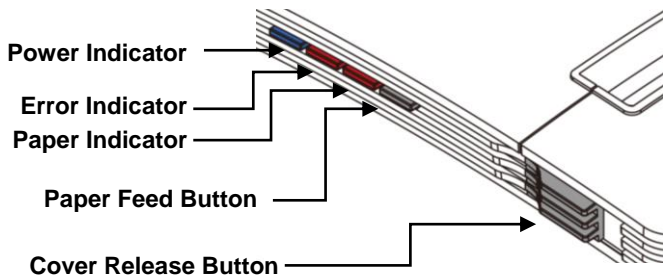
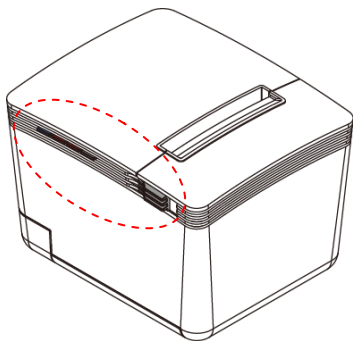


Rear View

Dimensions



Control buttons & Indicators



Control Buttons

Paper Feed:

This function is to advance the paper.





Press the key and the paper advances by a single line.

Press and hold the key for over 3 seconds and the paper advances by multiple lines.

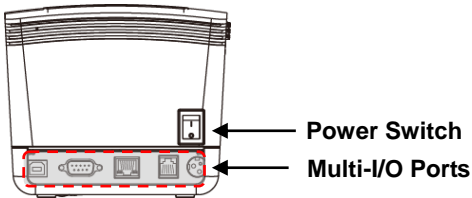
Cover Release Button:

Push the button to the right to open the printer cover.

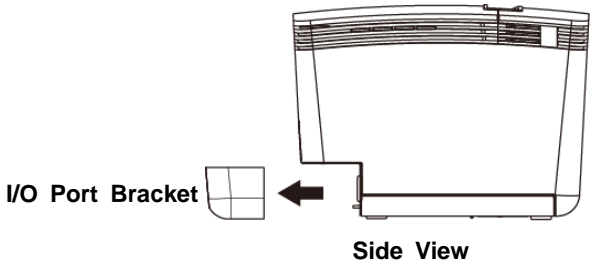
Indicator Status

Indicator	Status	Description
Power		Power Off
		Power On
Error		Printer Error (Out of paper, Printer head over heat, or paper cutter error)
Paper		Out of paper * The Error Indicator is lit as well

I/O Ports & Configuration DIP Switches



Rear View

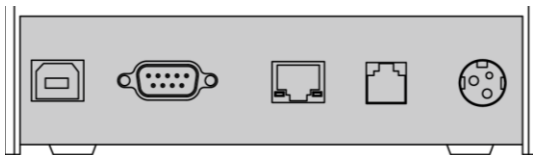


Note:

When plug the cables to the Printer, detach the I/O Port Bracket beforehand so as to secure connectors easily.

Remember to re-install the I/O Port Bracket to the printer as the connectors are properly secured.

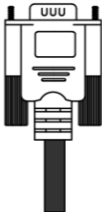
Multi-I/O Ports



USB



RS-232



RJ-45



RJ-11



PWR



***Printer Cable**

**Cash
Drawer**

**Power
Adaptor**

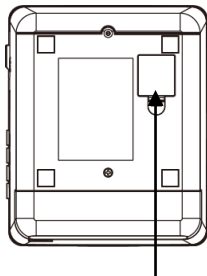
Note:

- Power Cord is selectable depending on the types of electrical plug.
- Printer cable is selectable depending on the interface required (RS-232 or USB B-Type).
- RJ-45 cable is not supplied and need purchased separately.

DIP Switch Configuration

To change the setting of the printer manually:

1. Turn off the printer.
2. Remove the protective cover of the DIP Switches.
3. Adjust the DIP switches to configure the printer.



Protective Cover

DIP Switch Setting



DIP	Function	ON	OFF
1	Paper Cutter	No	Yes*
2	Audio Alarm	Yes *	No
3	Print Density	Dark	Light *
4	Two-byte Character Code	No	Yes*
5	Character Per Line	42	48 *
6	Cutter with Cash Drawer	Yes	No *
7 & 8	Baud Rate Setting	---	OFF*

The "*" mark indicates the default value of each setting.

Baud Rate Setting (DIP 7, DIP 8)



19200
(*Default)



9600



115200

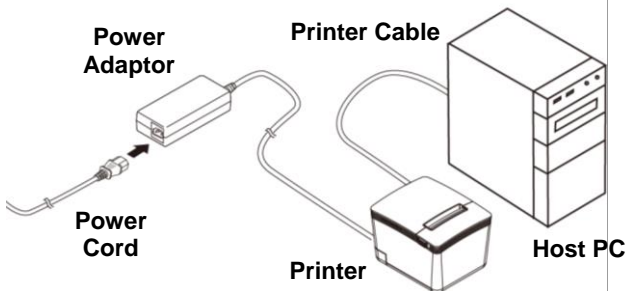


38400

C. Installing your Printer

1. Connecting Your Printer

Please check the printer and the supplied accessories before Installation. It's recommended to read the entire instruction manual prior to the installation.

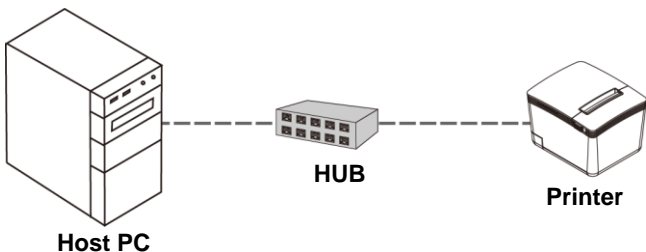


1. Place the printer on the designate location.
2. Detach the I/O Port Bracket.
Plug the connector of Power Adaptor to the printer.
3. Use the supplied Printer Cable (RS-232, USB or RJ-45) and connect to the Host PC.
4. Plug the Power Cord to the Power Adaptor and then plug to the power outlet.
5. If there is a Cash Drawer to be connected, connect the RJ-11 cable to the printer.
6. Re-install the I/O Port Bracket.

Note: Connect to the LAN:

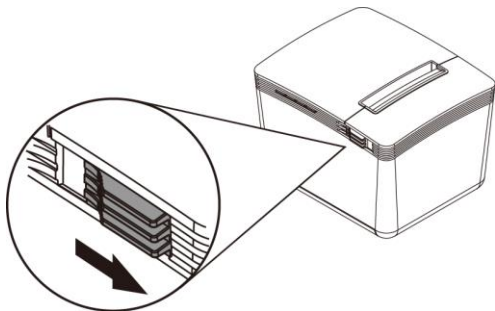
Make sure the Printer and HOST PC are properly connected to the HUB.

(The default IP address of the Printer is 192.168.123.100)

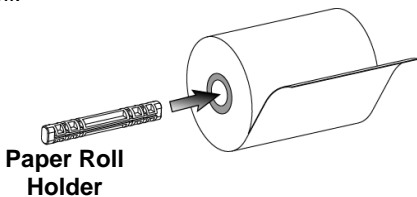


2. Install/Replace the Paper Roll

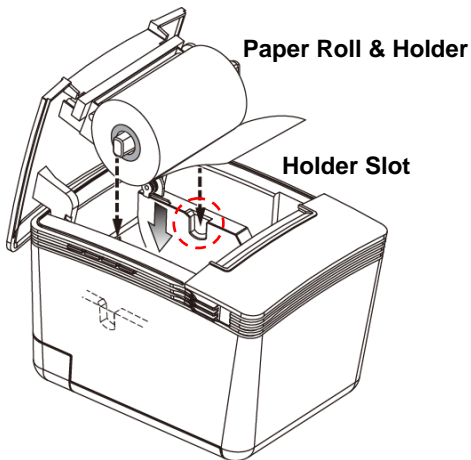
- a. Pull the Cover Release Button to open the Cover.



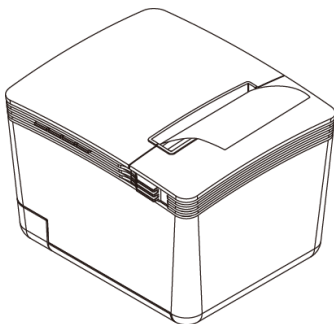
- b. Pass the Paper Roll Holder through the Receipt Paper Roll.



- c. Roll out and install the Paper Roll with Holder into the Printer. (with the edges of the paper roll holder fitted onto the holder slots)



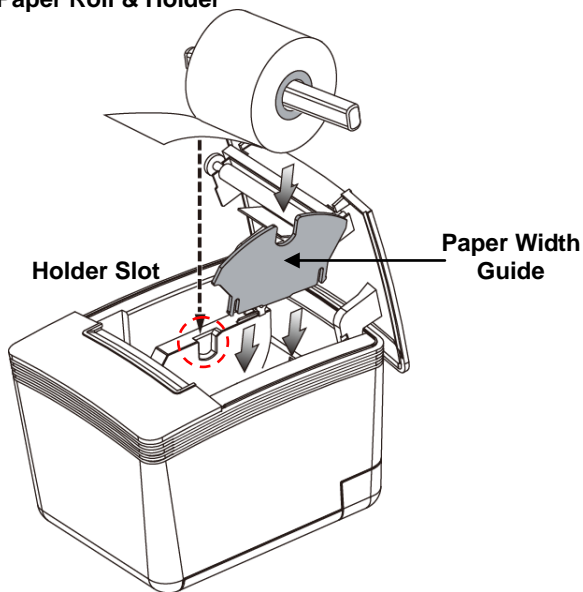
- d. Replace the Cover and tear out the paper.



- **Install the Paper Width Guide**

When using a paper roll in smaller width, install the Paper Width Guide first, and then install the paper roll with holder.

Paper Roll & Holder



3. Install the Driver of the Printer

Before installing the driver of your printer, make sure the printer is properly connected to the host PC.

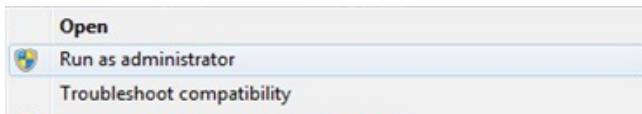
To install the driver of the printer:

1. Access the website www.fametech.com.tw and download the driver.
2. Double click the icon “SetupPRP.EXE” to initiate the installation.



Note:

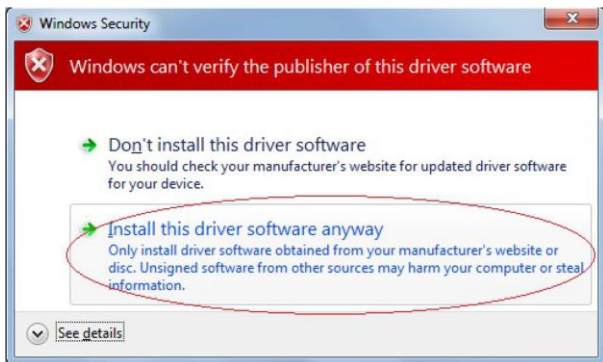
For Windows 7 / Vista and the later version,
Please Right-Click the icon and use
“**Run as administrator**” option while installing the
Driver.



3. Click “Install” to continue.



4. Select "Install this driver software anyway".



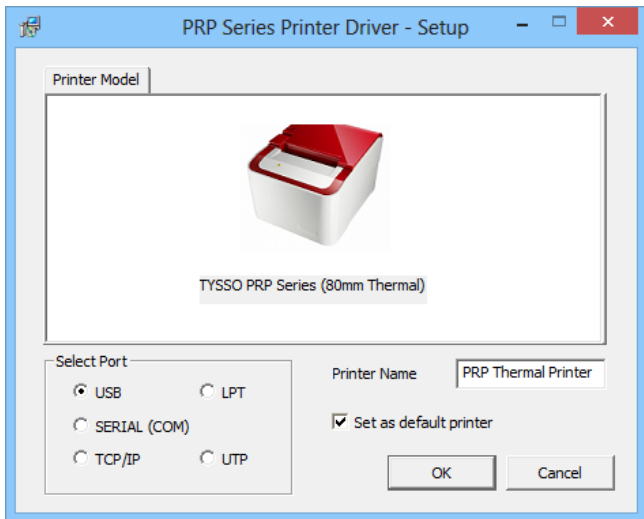
5. **Select the Printer Port.**

Enter printer name and select the port type for installation.

(USB, Serial, TCP/IP, LPT or UTP).

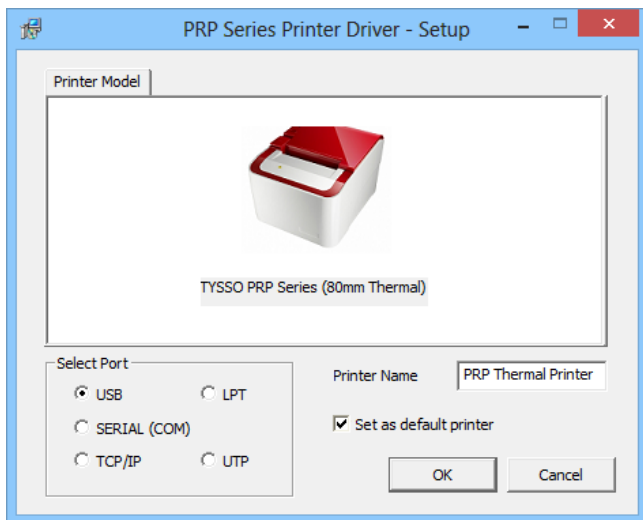
You can click the checkbox to set the printer as default printer.

Click “OK” to continue.

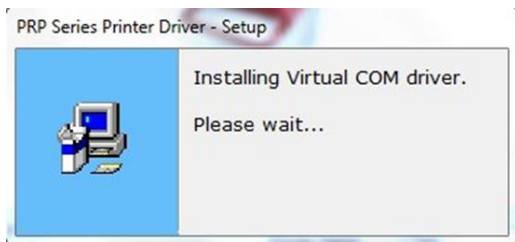


a. For USB Interface:

Select the USB port

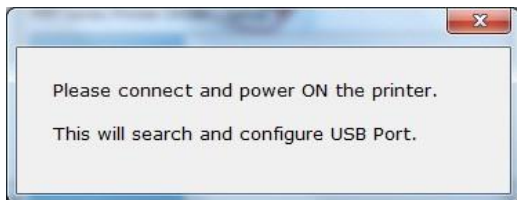


The Virtual COM driver is installed during the process.



- **Searching USB Device:**

If the printer is already attached and the message box below is displayed, please Power OFF and Power ON the printer to continue installation.



- **Installation completed**

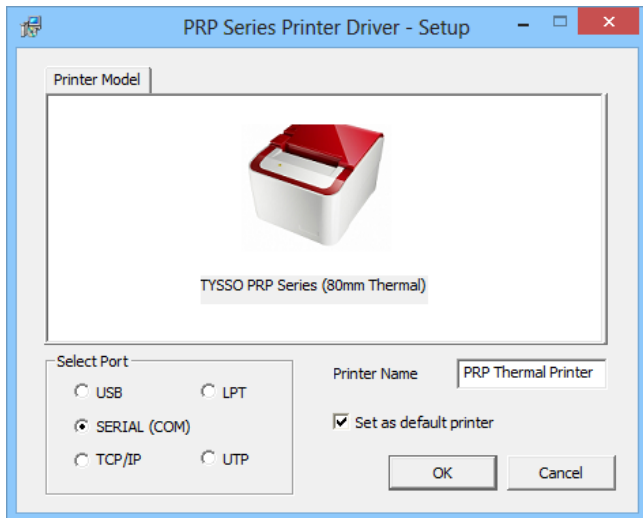
The driver is successfully installed.

Click “Finish” to exit the menu.

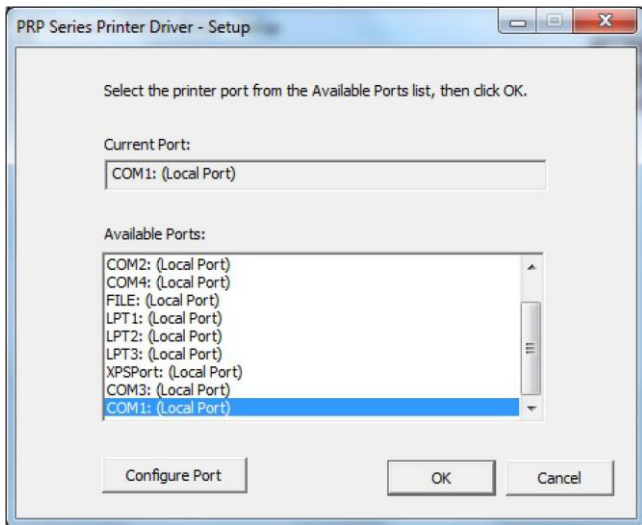


b. For Serial Interface

Select and configure the serial port for driver installation.



Select the COM port preferred and click “OK” to continue.

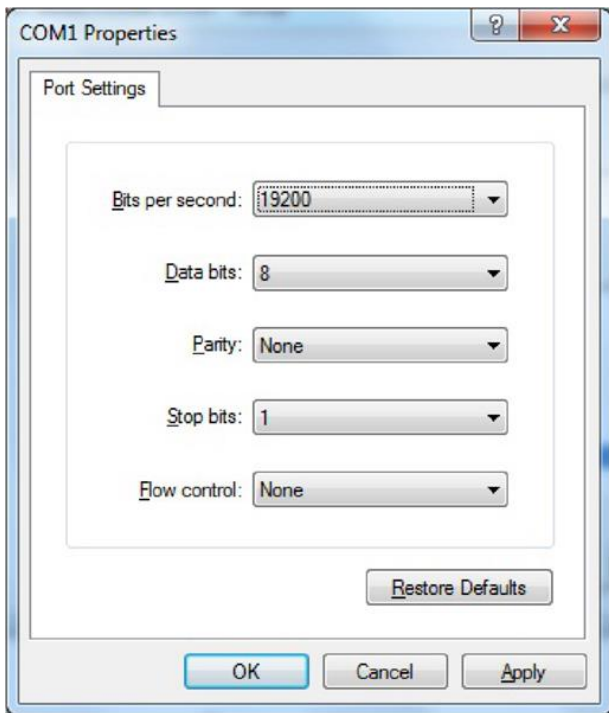


To configure the selected COM port, select the COM port and click “Configure Port” to continue (see next page).

- **Configure the Serial Port:**

Select the proper settings

(baud rates. Data bits, parity...etc.)



- **Installation completed**

The driver is successfully installed.

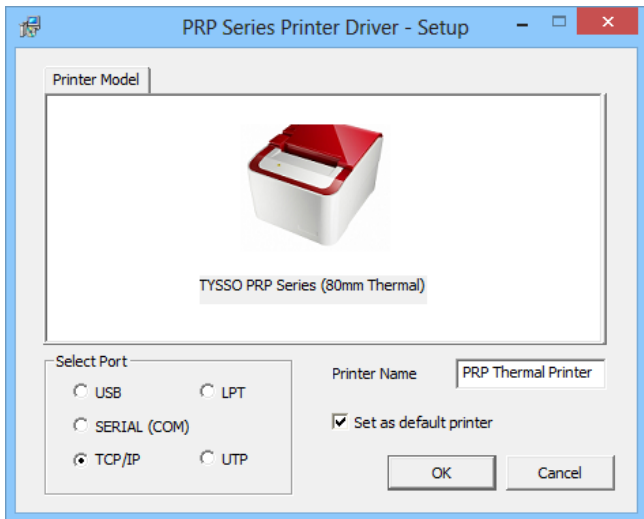
Click “Finish” to exit the menu.



c. For Ethernet (TCP/IP) Interface:

Select and assign a TCP/IP port for your printer.

Click “OK” to continue.



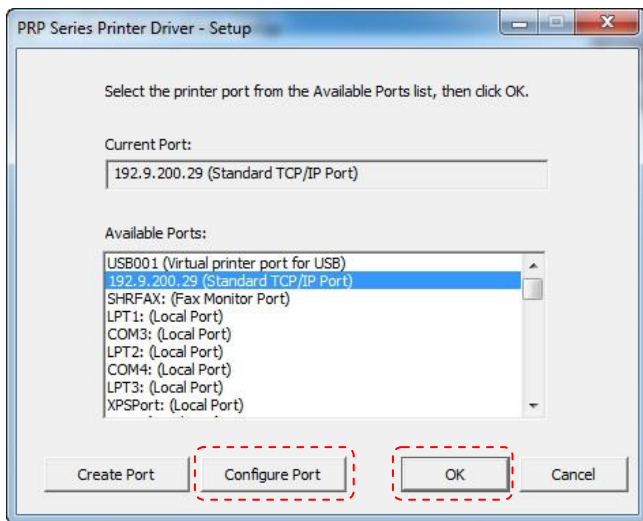
Note:

Printing on the TCP/IP Port is only possible if both IP Address (Printer and Computer) belongs to the same class.

- **Select IP Address**

Move the cursor to the Available Port (IP address).

Click “OK” to continue.

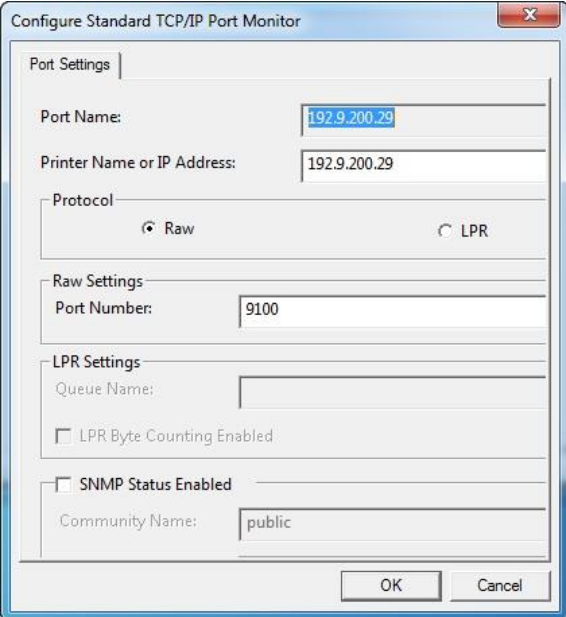


Note:

User can configure the selected USB IP port or create a new IP address manually.

To Configure The TCP/IP Port:

Configure port (If required) by clicking “Configure Port” button and apply settings.



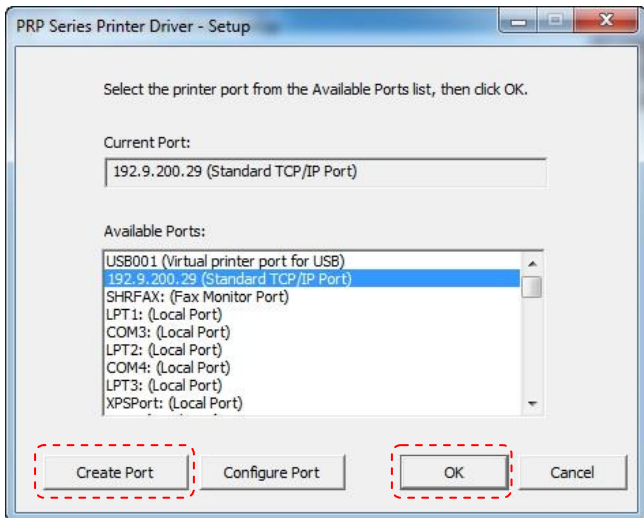
The image shows a Windows-style dialog box titled "Configure Standard TCP/IP Port Monitor". The dialog is divided into several sections:

- Port Settings:** Contains two text input fields. The first is labeled "Port Name:" and contains the text "192.9.200.29". The second is labeled "Printer Name or IP Address:" and also contains "192.9.200.29".
- Protocol:** Contains two radio buttons. The first is labeled "Raw" and is selected. The second is labeled "LPR".
- Raw Settings:** Contains one text input field labeled "Port Number:" with the value "9100".
- LPR Settings:** Contains one text input field labeled "Queue Name:" which is empty. Below it is a checkbox labeled "LPR Byte Counting Enabled" which is unchecked.
- SNMP Status Enabled:** Contains one checkbox labeled "SNMP Status Enabled" which is unchecked. Below it is a text input field labeled "Community Name:" with the value "public".

At the bottom right of the dialog, there are two buttons: "OK" and "Cancel".

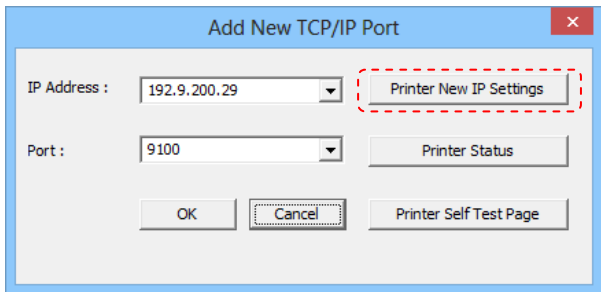
To Create a New TCP/IP Port:

If TCP/IP port doesn't exist in the list, click "Create Port" button for further installation.



Add New TCP/IP Port:

IP Addresses of all the Printers that are attached over the network are shown in “Add New TCP/IP Port” dialog.



IP Address:

The present IP address setting of the printer. Select a correct IP address for the printer.

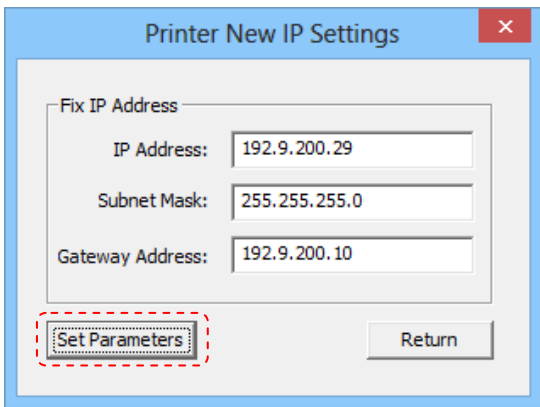
Printer Self Test Page:

User can click “Printer Self Test Page” button to print out the test page.

Set Parameters:

Click “Printer New IP Settings” button to configure the Printer parameters settings (see next page).

Printer New IP Settings:



Printer New IP Settings

Fix IP Address

IP Address: 192.9.200.29

Subnet Mask: 255.255.255.0

Gateway Address: 192.9.200.10

Set Parameters

Return

User can enter the New IP address, Subnet Mask, and Gateway Address manually.

Click “Set Parameters” button to confirm the new parameters of Printer.

Note: Reboot the Printer

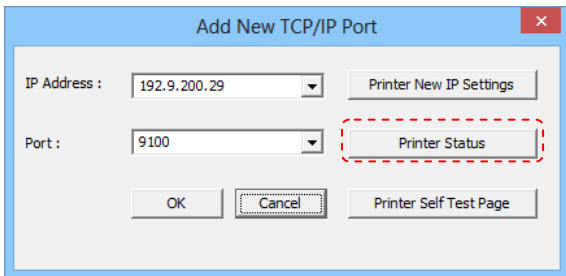
The printer will reboot automatically and return to the previous menu after the new parameters are confirmed.

Cancel:

User can click “Return” button to cancel the new IP settings and return to the previous menu.

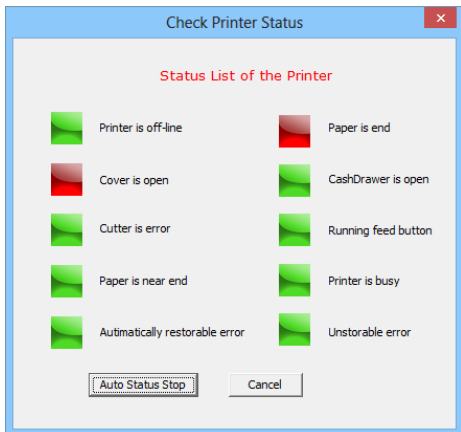
Printer Status:

Click “Printer Status” to examine the printer.



Check the status list and resolving the red-mark items.

Click “Cancel” to return



- **Installation completed**

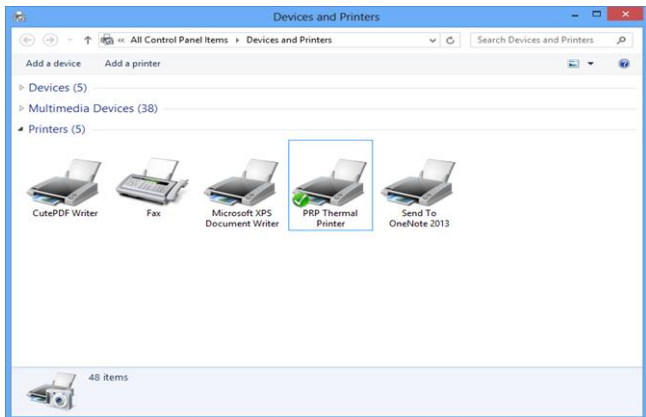
The driver is successfully installed.

Click "Finish" to exit the menu.



d. Examine the Printer

Now user can access to the “Devices and Printers” and examine the new printer.



For LPT and UTP (USB to Parallel) Interface (customized models only)

The two interfaces are only reserved for customized models only. Please consult your local supplier before installation.

To install the driver, please refer to the appendix for instructions

D. Appendix

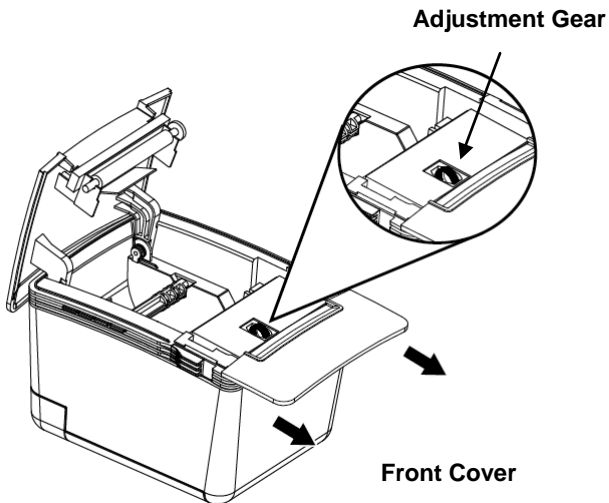
1. Cutter Maintenance

In general, the printer will initial and reset the cutter when turn on the power. To reset the cutter back to the initial position:

1. Turn off the printer.
2. Turn on the printer and the printer will initial and reset the cutter.

User can manually reset the cutter back to initial position (as images illustrated):

1. Push the Cover Release Button to open the Cover. Examine and remove the paper dust from the printer by using a soft brush.
2. Push the Front Cover and remove it from the printer.
3. There is an Adjustment Gear in the cutter. Turn the Adjustment Gear to move the cutter back to the position.



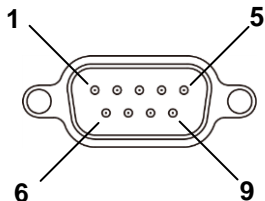
Note:

Do not remove the protective cover with force or it may damage the cutter or printer head.

Warning:

Beware of the Cutting Edge of the cutter module during maintenance in order to avoid injury to the person near the printer.

2. RS-232 Pin Assignment



Pin	Signal	Description
1	N.C.	
2	TXD	XON/XOF Handshake (Control codes transmission).
3	RXD	Data transmission (the printer receives data from the HOST)
4	N.C.	
5	GND	Ground
6	DTR	Printer Status
7	N.C.	
8	RTS.	Printer Status
9	N.C.	

3. RJ-11 Pin Assignment

Pin	Signal	Signal Direction	Description
1	Ground	---	Frame Ground
2	Cash Drawer Kick Out Signal 1	Output	
3	Cash Drawer Status	Input	Open/Close
4	+VDC 24v	---	
5	Cash Drawer Kick Out Signal 2	Output	
6	GND	---	Signal Ground

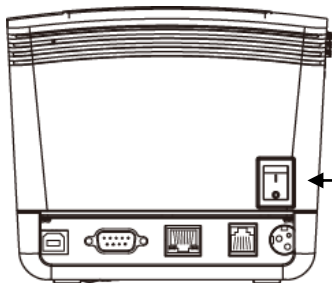
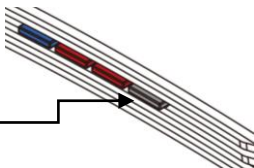
4. Self Test

This function allows user to perform self-test and print out the settings of the printer unit:

1. Turn off the printer.
2. Press and hold the Paper Feed Button.
3. Turn on the Power Switch of the printer.
4. As the Indicators blink,
release the Paper Feed Button.

The Indicators would blink and then the printer starts printing out the self-test data.

Paper Feed Button



Power Switch

Protocols:	TCP/IP (A1)
Mac address:	X-XXX-XXX-XX
IP address:	192.168.123.100
Netmask:	255.255.255.0
Gateway:	192.168.1.1
DHCP:	Disabled

Print out the Self-test data

5. Code Page Setup

1. Access the website www.fametech.com.tw and download the utility files.
2. Click the folder “SetCodePage” to access the software



SetCodePage

3. Double click the icon “Setup.EXE” to initial installation. Follow the instructions to install the utility.



Setup
Windows Installer Package
333 KB

● Code Page Setup Utility

This utility can help user to setup the code page of the printer.

Note: Before Setup

It may need to re-configure the printer prior to the codepage setup (e.g.: DIP switch).

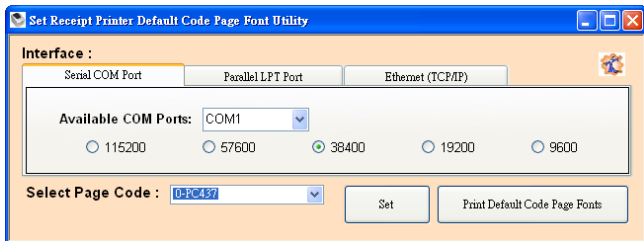
It's recommended to consult the technical personnel relating to the information about the code page and application.

■ Interface

User can establish communication with printer via this menu. Select the proper submenu by the connection type of the printer.

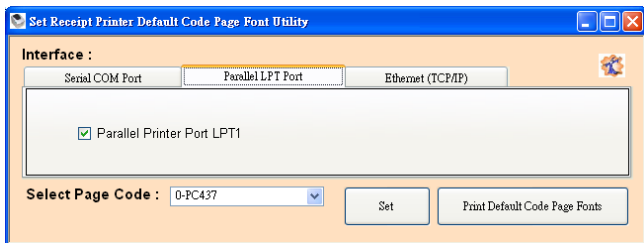
For Serial COM Port:

Select the proper COM port and baud rate to establish communication.



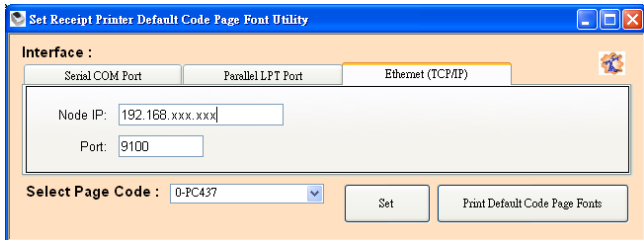
For Parallel LPT Port:

Select LPT1 as the printer port to establish communication.



For Ethernet (TCP/IP):

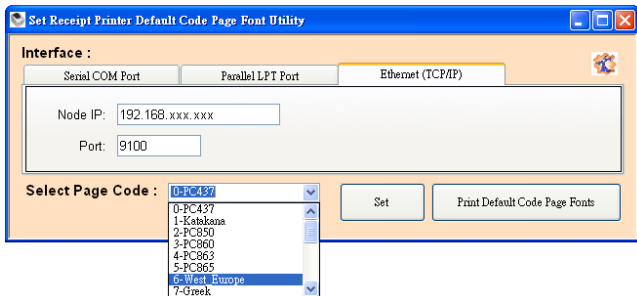
Enter the IP address of the printer to establish the communication.



■ Select Page Code

To select the codepage desired:

1. Make sure to the DIP switch 4 of the printer is set **ON** (please refer to DIP Switch Configuration for further information).
2. Go to the scroll menu and select the preset codepage desired.
User can enter the codepage number into the field manually. (Please refer to the printed Self-Test page for the code number support).
3. Click “Set” button to confirm the setting.



4. Re-initiate the Printer:

Be sure to **Turn-Off and Turn-On** the printer again to initiate the printer with new codepage setting.
(User can perform the self-test again to exam the new codepage setting)

6. LPT and UTP (USB to Parallel) Interface installation (customized models reserved)

Before Installation:

Please consult the local supplier and purchase the customized models support LPT or UTP (USB to Parallel) interface.

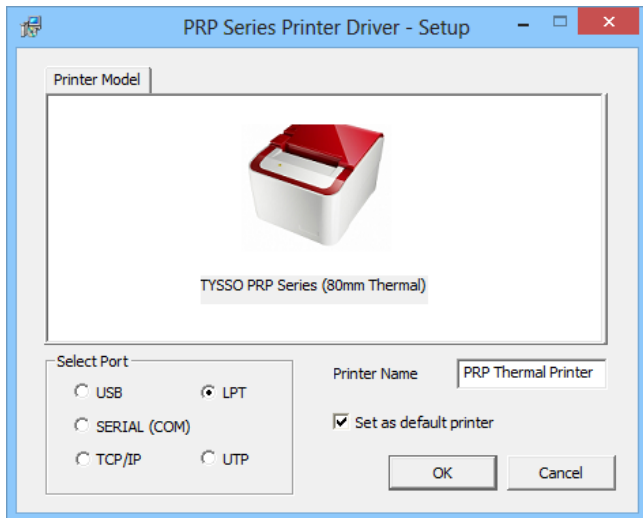
WARNING:

This instruction is ONLY for customized models with LPT or UTP (USB to Parallel) interface.

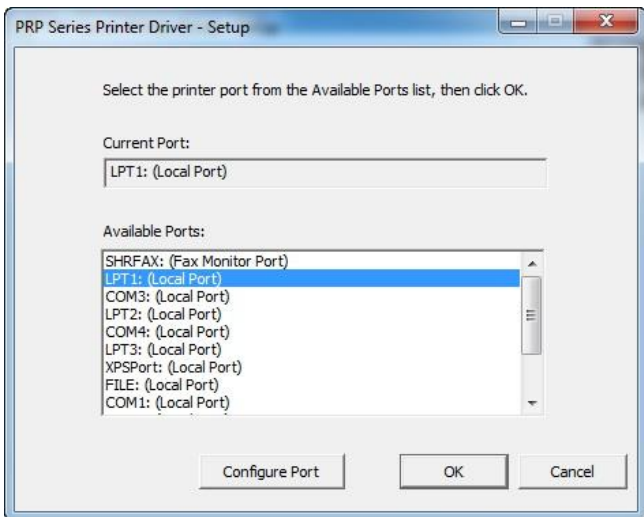
DO NOT install the driver to any models not support the LPT or UTP interface. It may cause the printer not functioning

- **For LPT Interface:**

Select the LPT port



Select the LPT port preferred and click “OK” to continue.



Installation completed:

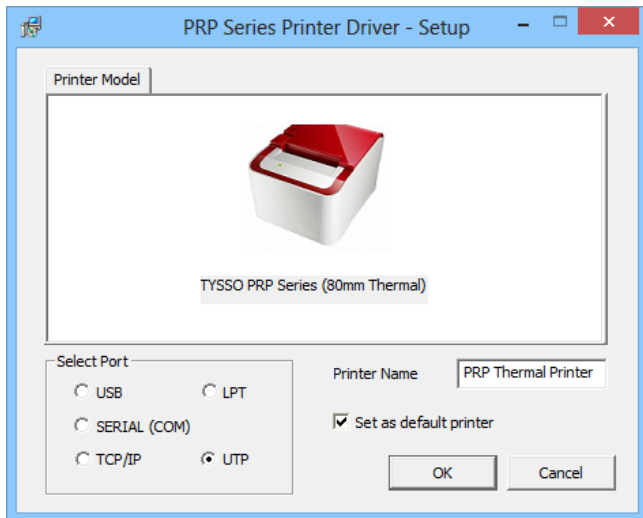
The driver is successfully installed.

Click "Finish" to exit the menu.

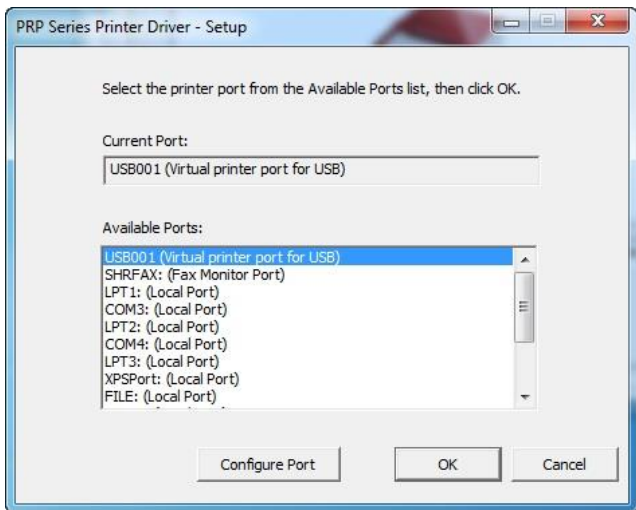


- **For UTP Interface:**

Select the UTP port



Select the LPT port preferred and click “OK” to continue.



Installation completed:

The driver is successfully installed.

Click "Finish" to exit the menu.



